



Belle

ENCHANTED ROSE

Create your own enchanted rose — one that can stay in bloom forever!

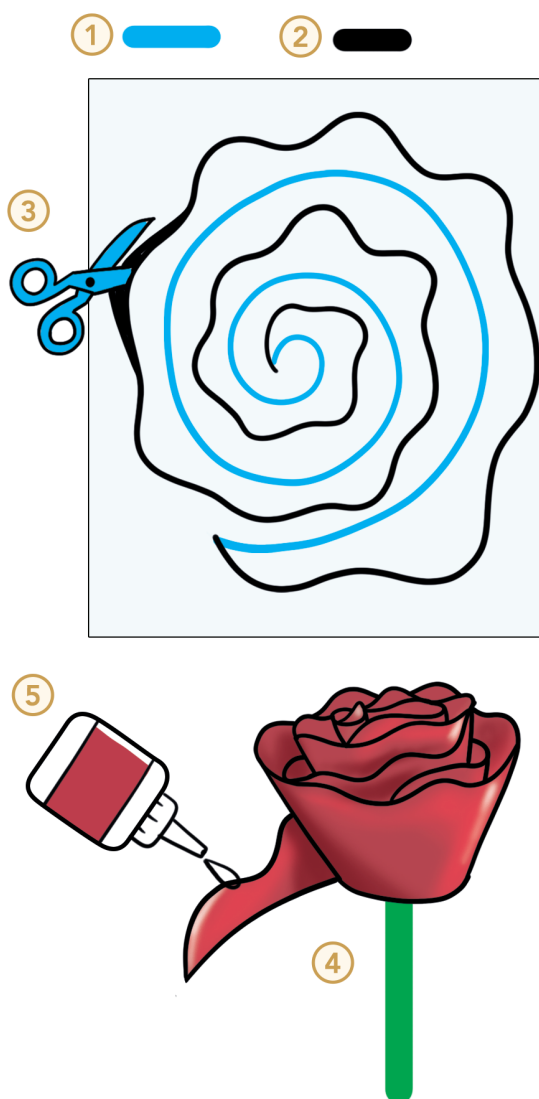
Supplies

- Chenille Stems
- Scissors
- Paper
- Glue

Directions

1. On a piece of paper, draw a large swirl, starting from the centre and working outward. Be sure to leave space between the lines.
2. Around the swirl, about 2cm away, draw a wavy flower petal-like outline. Connect both ends to complete the shape.
3. Cut out the shape.
4. Attach a chenille stem to the centre of the circle and roll the paper around it.
5. Secure the end with glue—and voilà! You've created an enchanted rose that never withers.

 Ask an Adult for Help



Belle

TEA PARTY TIME

Just like Chip, create your very own magical teacup creation to make teatime extra special.



Supplies

- Scissors
- Colouring Supplies
- Glue



Directions

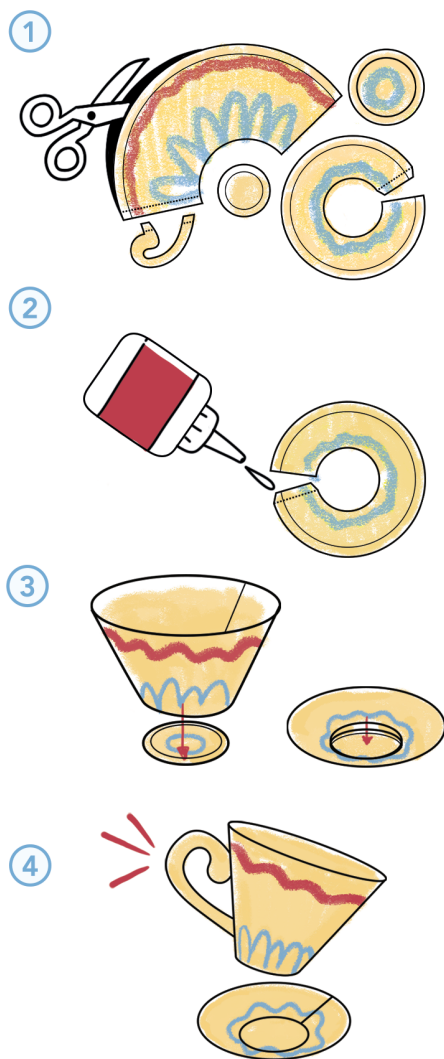
1. Carefully cut out all the teacup pieces and decorate them with your favourite colours and patterns.
2. Put a thin line of glue along the edge of your saucer piece and form it into a circle.
3. Connect all the pieces to make your round saucer and cup.
4. Glue the handle onto your cup to complete your teacup creation.
5. Now you're ready to invite your friends to a magical tea party just like Belle!



**PRINTABLE TEACUP TEMPLATE AVAILABLE
ON THE NEXT PAGE!**



Ask an Adult for Help



Belle's TEA PARTY TIME

