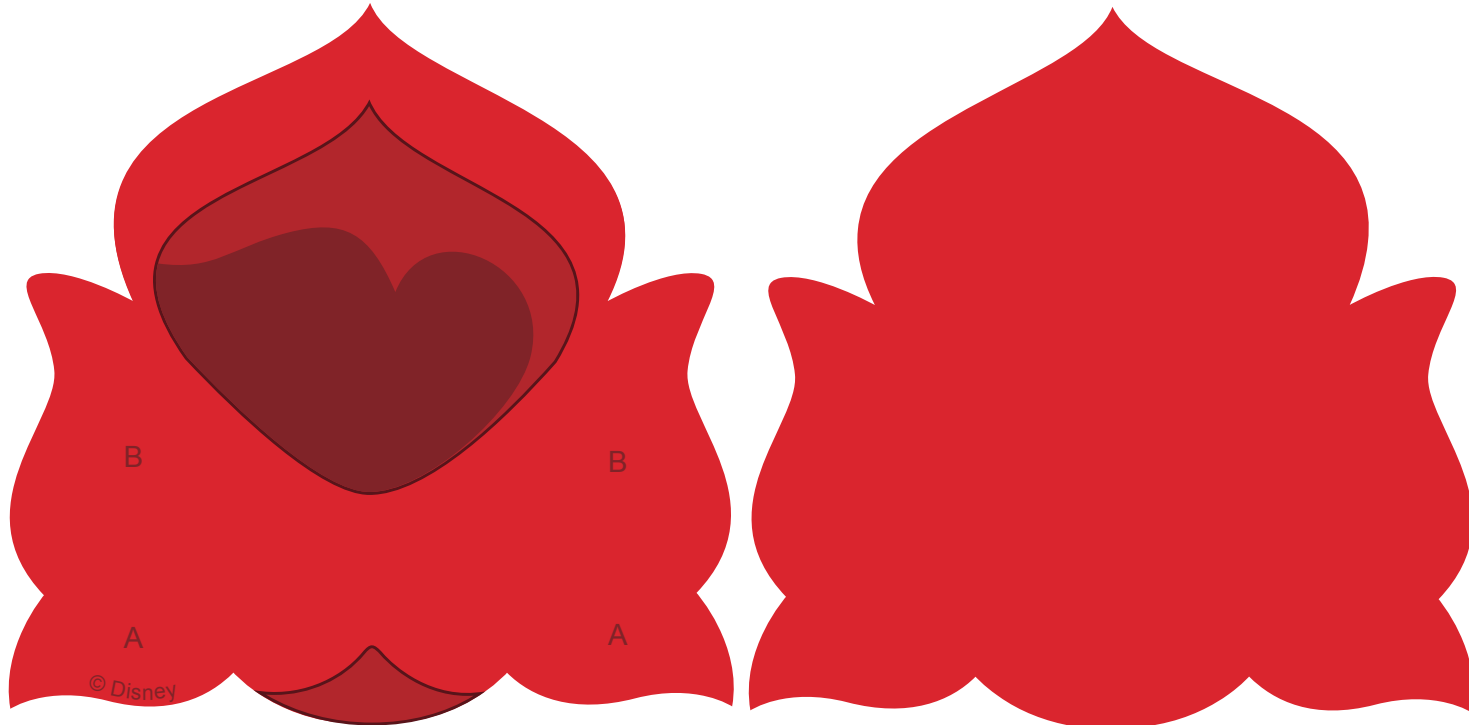
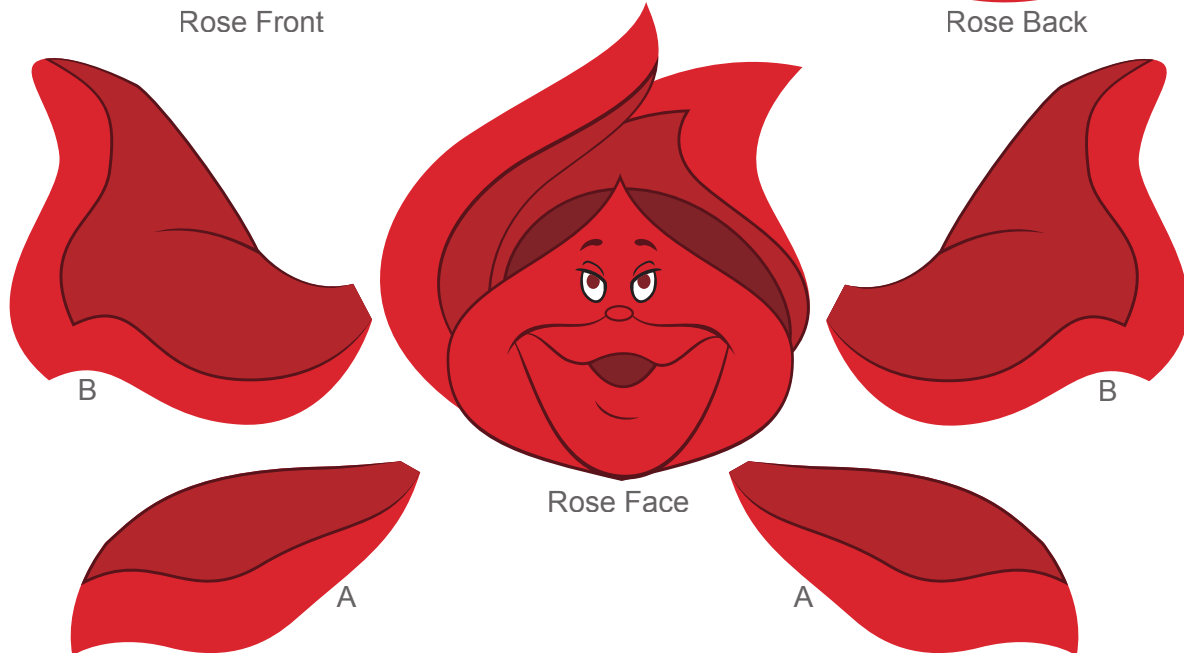


Rose



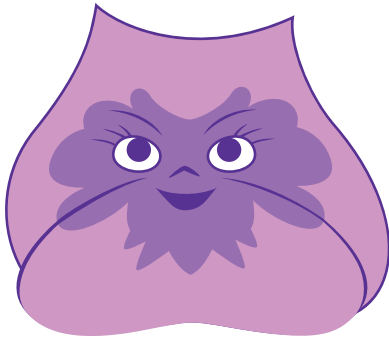
Rose Front

Rose Back

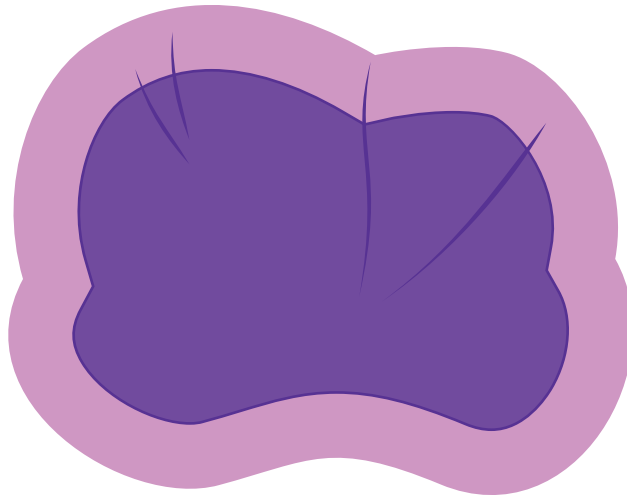


Rose Face

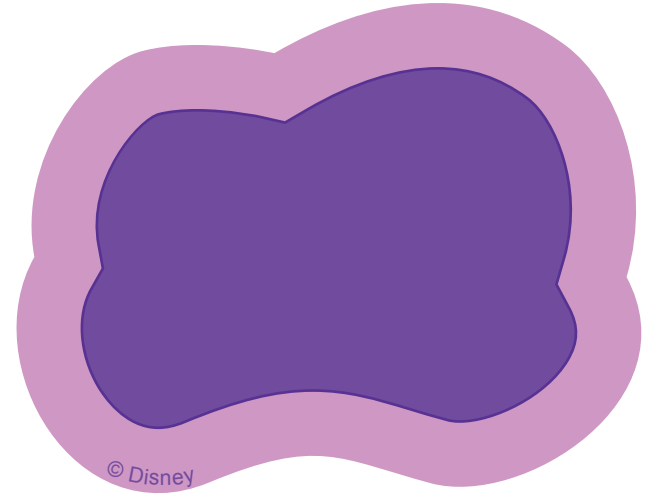
Pansies



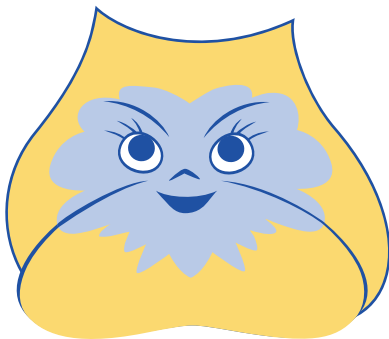
Pansy Face



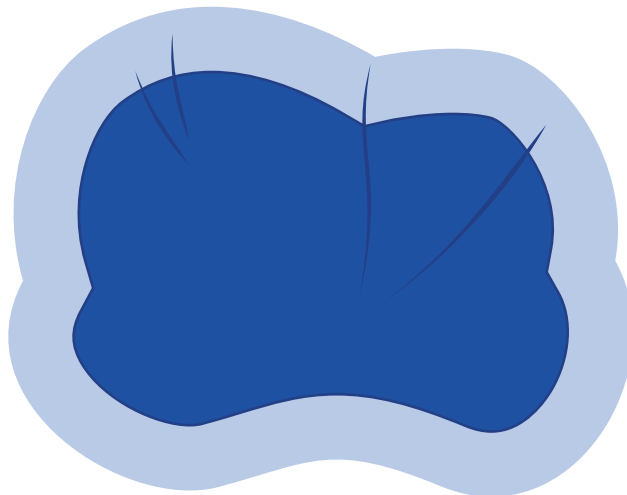
Pansy Front



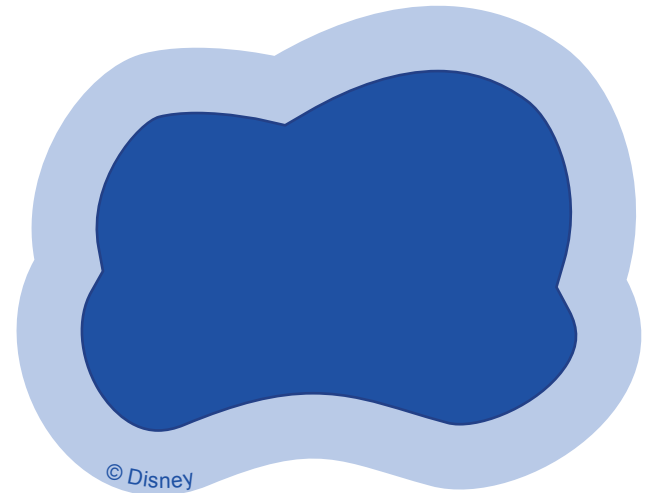
Pansy Back



Pansy Face

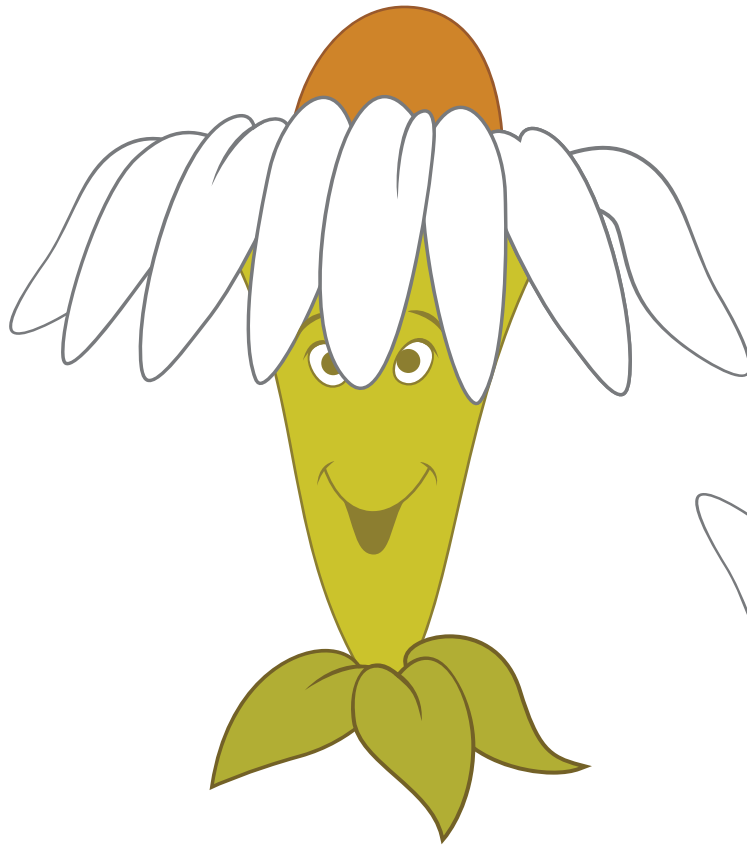


Pansy Front

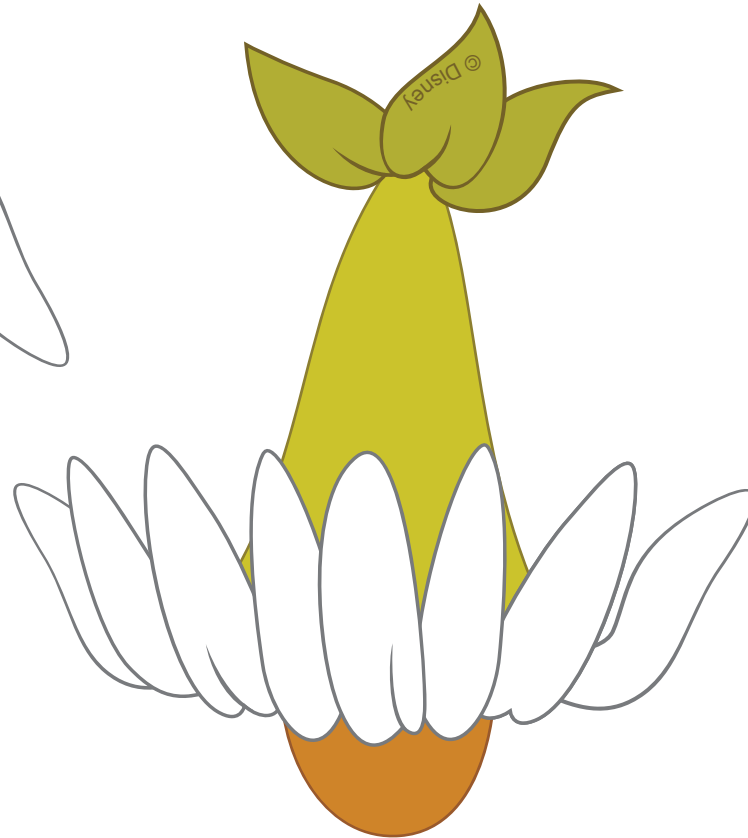


Pansy Back

Daisy

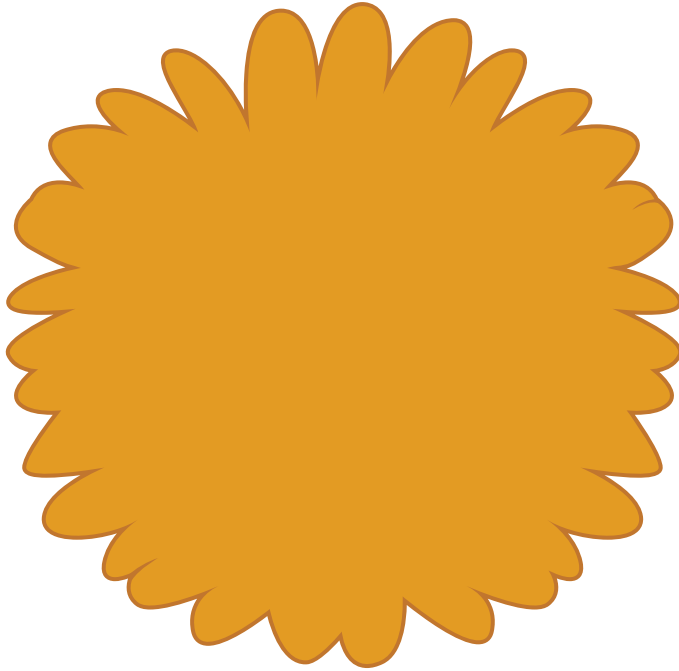


Daisy Front

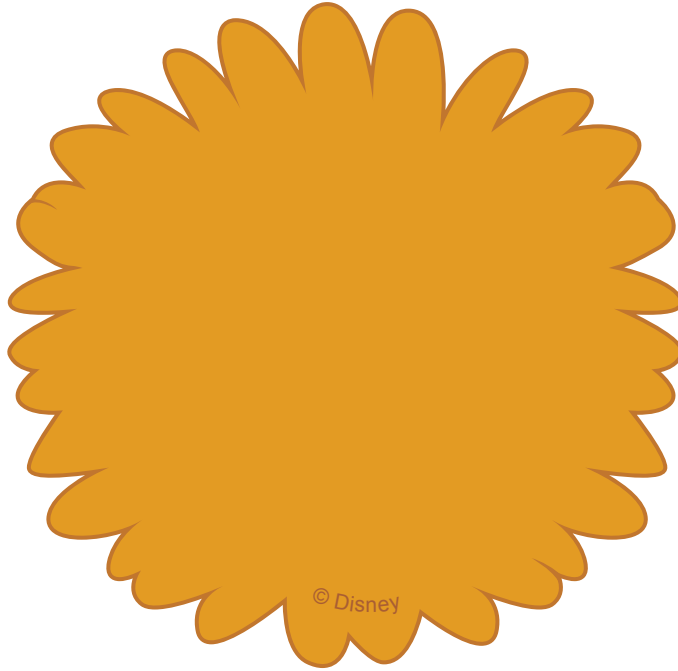


Daisy Back

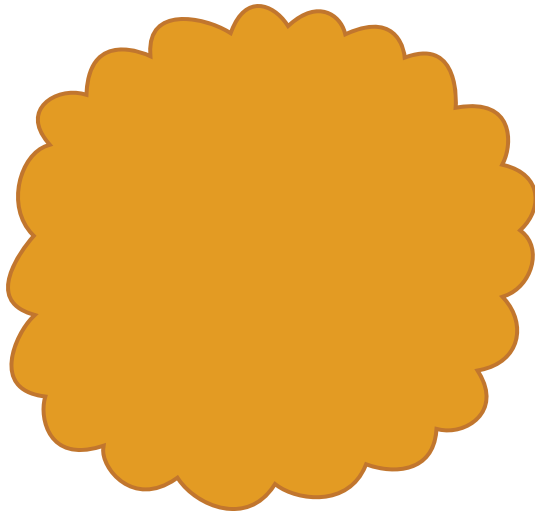
Dandelion



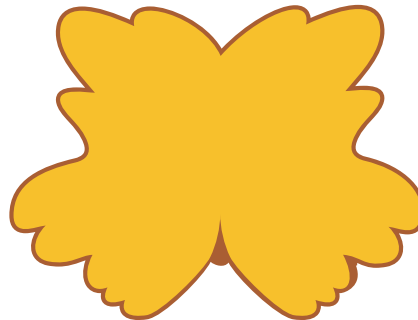
Dandelion Front



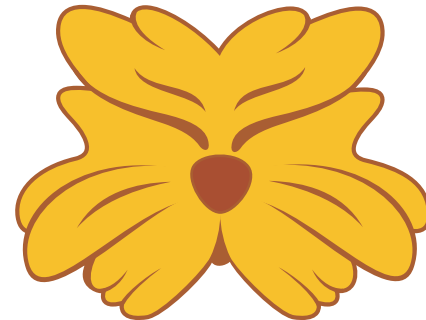
Dandelion Back



Dandelion Center

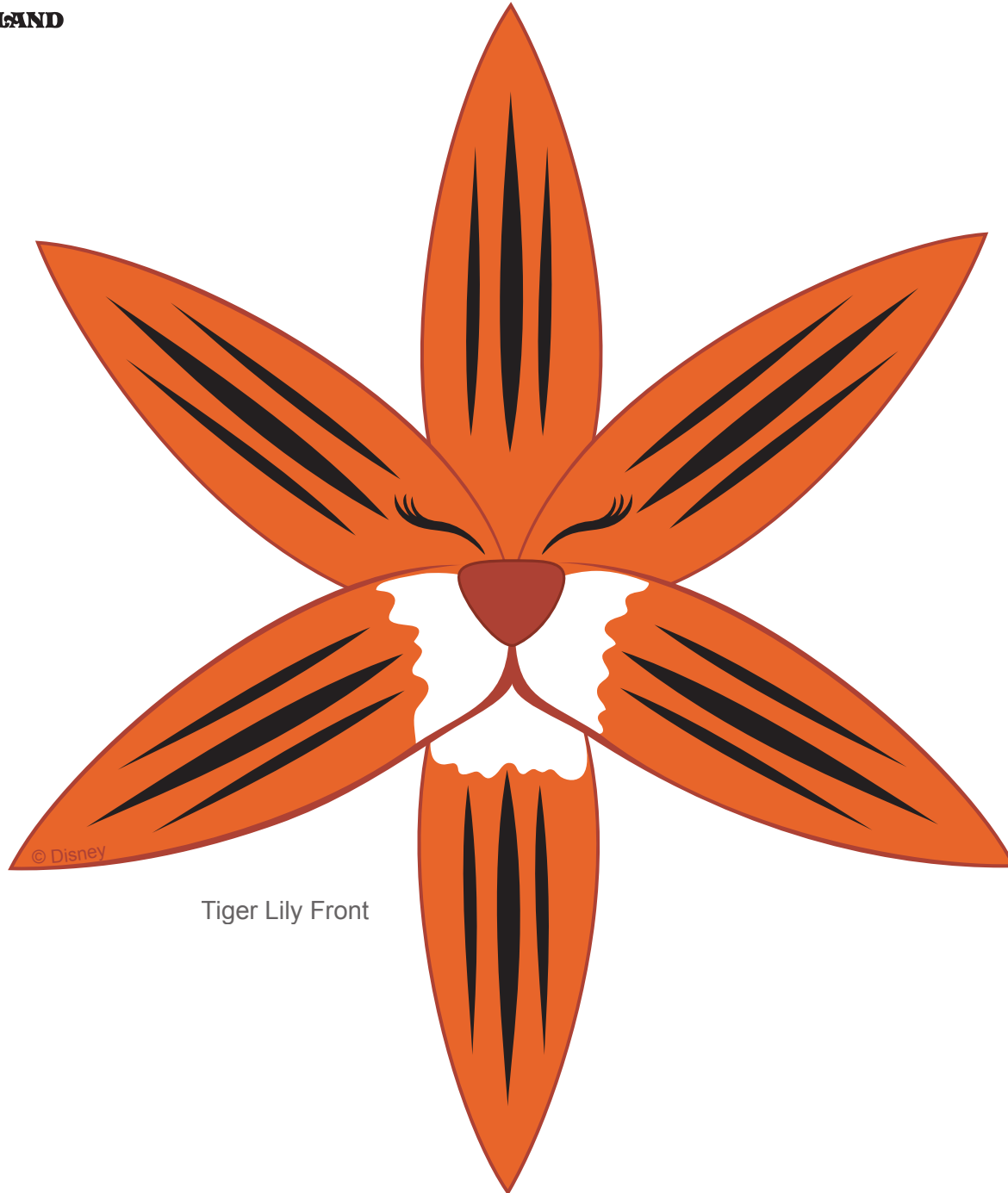


Dandelion Face Back

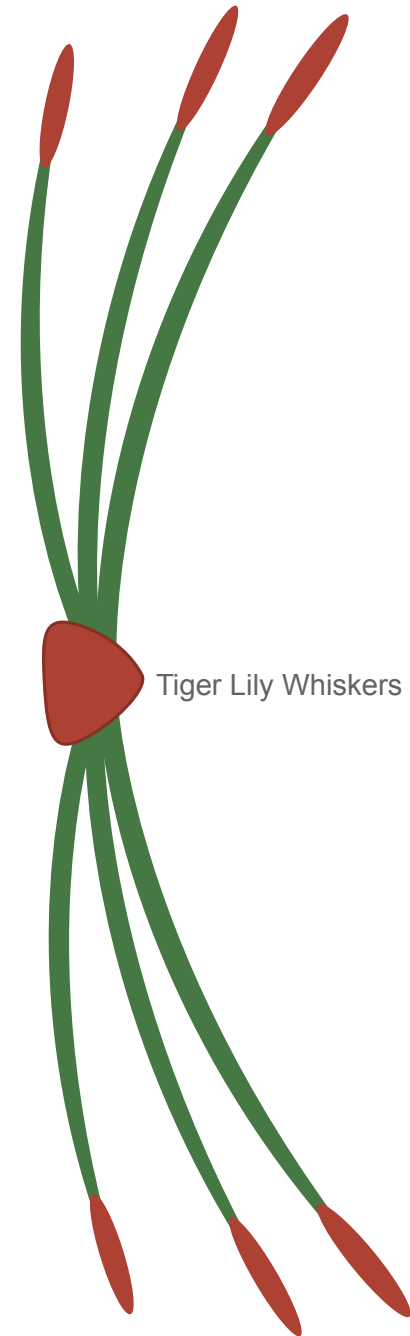


Dandelion Face

Tiger Lily

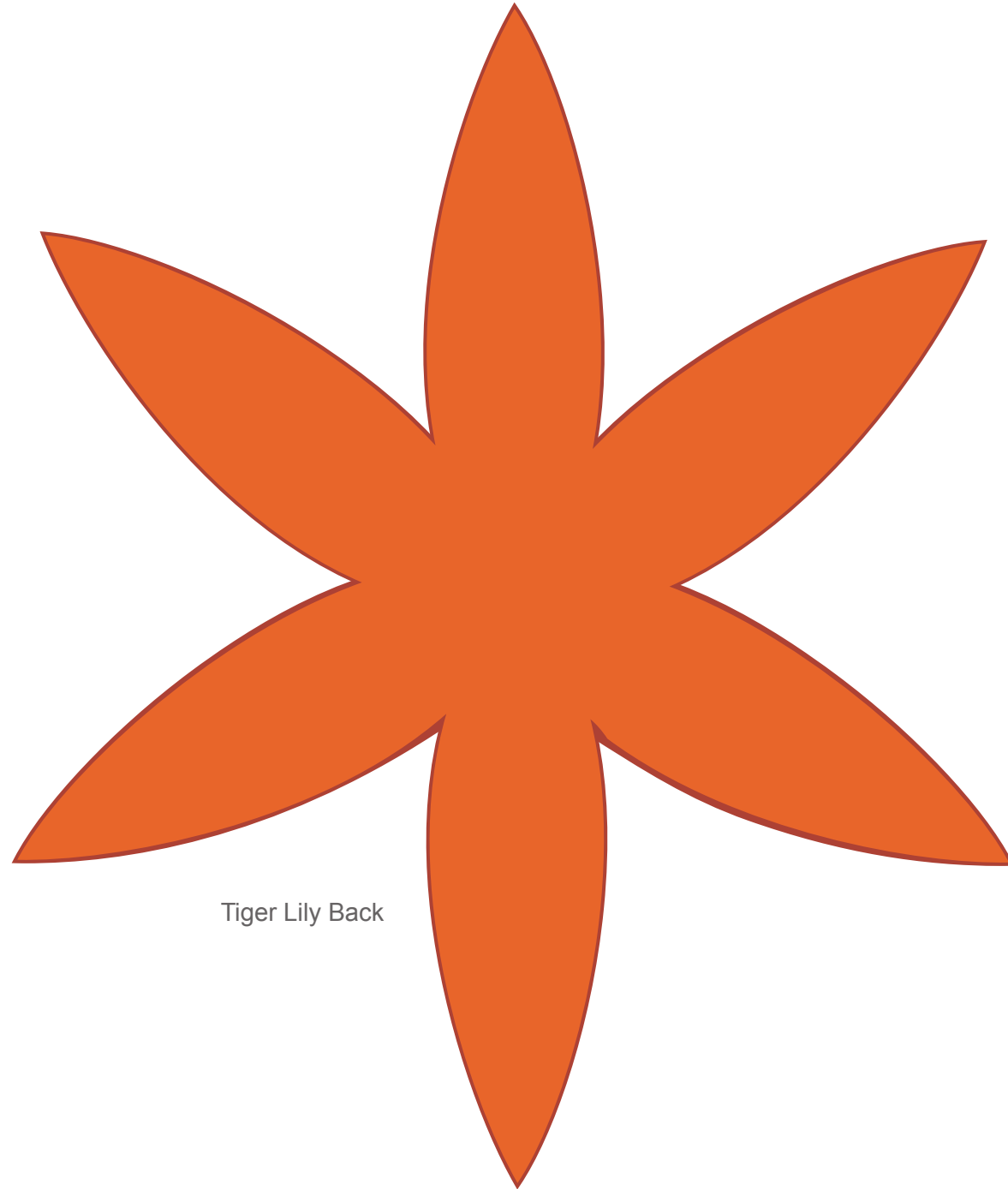


Tiger Lily Front



Tiger Lily Whiskers

Tiger Lily



Tiger Lily Back

### Materials:

Alice in Wonderland Golden Afternoon Flowers template

6 Green pipe cleaners

Glue

### Rose

1. Print the Rose template on cardstock and cut out the pieces.
2. Glue the “A” pieces to the areas labeled “A” on Rose’s front.
3. Glue the “B” pieces to the areas labeled “B” on Rose’s front.
4. Glue Rose’s face to the center of Rose’s front.
5. Spread glue on the white side of the “Rose Back” piece and place the end of a green pipe cleaner in the center. Place the “Rose Front” piece on top of the pipe cleaner to secure it in place. Make sure the front and back pieces are lined up before the glue dries.
6. Once the glue is dry, gently curve Rose’s petals toward you.

### Pansies

1. Print the Pansy template on cardstock and cut out the pieces.
2. Glue the purple “Pansy Face” to the bottom center of the “Pansy Front” piece.
3. Spread glue on the white side of the “Pansy Back” piece and place the end of a green pipe cleaner in the center. Place the “Pansy Front” piece on top of the pipe cleaner to secure it in place. Make sure the front and back pieces are lined up before the glue dries.
4. Repeat steps 2-3 for the blue pansy.

### Daisy

1. Print the Daisy template on cardstock and cut out the pieces.
2. Spread glue on the white side of the “Daisy Back” piece and place the end of a green pipe cleaner in the center. Place the “Daisy Front” piece on top of the pipe cleaner to secure it place. Make sure the front and back pieces are lined up before the glue dries.

### Dandelion

1. Print the Dandelion template on cardstock and cut out the pieces.
2. Glue the “Dandelion Center” piece to the middle of the “Dandelion Front” piece.
3. Glue the front and back pieces of the Dandelion’s face together. Glue the completed face to the middle of the “Dandelion Center” piece.
4. Spread glue on the white side of the “Dandelion Back” piece and place the end of a green pipe cleaner in the center. Place the “Dandelion Front” piece on top of the pipe cleaner to secure it in place. Make sure the front and back pieces are lined up before the glue dries.

### Tiger Lily

1. Print the Tiger Lily template on cardstock and cut out the pieces.
2. Secure the “Tiger Lily Front” piece to the “Tiger Lily Back” piece with glue.
3. Glue the “Tiger Lily Whiskers” to the center of the face.
4. Once the glue is dry, gently curl the petals away from you.
5. Glue the end of a green pipe cleaner to the back of Tiger Lily.